



FISCAL YEAR 2015 - 2016
ANNUAL REPORT

JULY 1, 2015 - JUNE 30, 2016





MISSION STATEMENT

VISION

Our desired future state

To be the best managed, most respected and most influential conservation organization in the world, for the benefit of all stakeholders and wild sheep worldwide.

PURPOSE

Why we exist

To Put and Keep Sheep on the Mountain™

MISSION

What we do

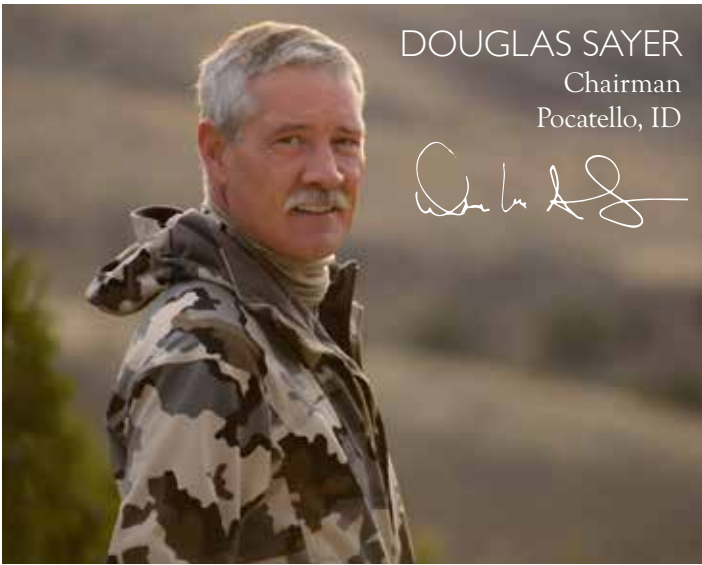
We enhance wild sheep populations, promote scientific wildlife management, educate the public and youth on sustainable use and the conservation benefits of hunting while promoting the interests of the hunter and all stakeholders.

VALUES

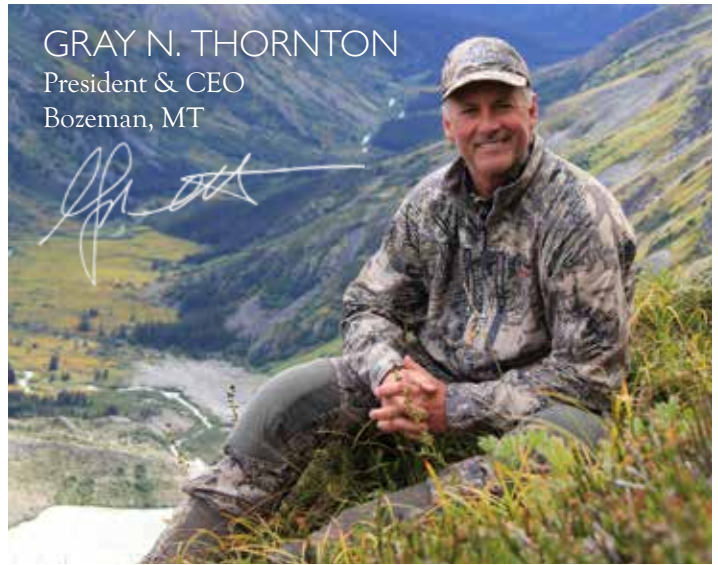
The principles that guide us

Honesty	Respect for Wildlife
Integrity	Hunting Ethics
Respect for Others	Accountability
Teamwork	Stewardship
Positive Attitude	Loyalty





DOUGLAS SAYER
Chairman
Pocatello, ID



GRAY N. THORNTON
President & CEO
Bozeman, MT

After three record years we have directed almost \$13.5 Million dollars to mission funding. Because of our successful conventions, membership and giving programs we have raised and directed over \$4 million dollars a year for the last three years and set a new record with \$4,684,761 in Fiscal Year 2015-2016 going towards wild sheep conservation and other programs that support our mission. The continued giving and participation in the Marco Polo Society™, Chadwick Ram Society™, Summit Life and Life Member programs along with the generosity displayed by all of our members makes me believe that this trend will continue during this coming year.

The staff and teams both in our new headquarters as well as in Cody have worked hard to prepare us for what looks like another record-setting convention, all while handling a move of our office and establishing our headquarters in Bozeman. There has been significant activity signing up new Marco Polo Society™ and Chadwick Ram Society™ members. Members are making a rush to become new Summit Life members largely because of the excitement surrounding the Life Member Breakfast and the action planned for this event at the convention.

Conservation is our priority and it takes continued giving for us to meet our mission. We are on track executing our N.A. Conservation Vision 2020 and it's because of the dedicated staff and Professional Resource Advisors that continue to donate their time and expertise to our goals and projects. The Conservation Committee, Legislative Affairs Committee and the Professional Resource Advisory Board have worked hard all summer to not only execute our tasks but also take a hard look at the processes of how we do this work. Everyone is working towards improving our processes so we can maximize our dollars and get the most out of your conservation contributions. Our team is committed and comprised of the most credible resources in North America. If we can keep funding the mission, they will be successful in delivering the results our wild sheep resource needs.

We are in a strong position to continue our upward trend of raising more and more dollars for the funding of wild sheep conservation efforts and projects. Our future is bright because of the quality of our membership and their generous gifts. We are thankful to all of you who are dedicated to the WSF and continue to make it a priority in your lives.

Fiscal Year 2015-16 was another record breaker for the Wild Sheep Foundation. After setting two back-to-back record conventions in 2014 and 2015, we bested our high mark again in 2016 by 6%. This success, paired with the altruism of the WSF family and our Marco Polo™, Chadwick Ram™ and Legacy Societies, enabled us for the third consecutive year to direct more than \$4 Million to wild sheep conservation and other mission programs.

Conservation is what we do – it defines who we are. During FY 2015-16 we raised and directed more than \$2.7 Million to state, provincial and tribal agencies to fund wild sheep and other wildlife conservation efforts, more than \$1.13 Million to education and advocacy initiatives, more than \$525,000 to support our industry and guide/outfitter association partners, more than \$211,000 to wild sheep disease research, habitat enhancement and management plans and another \$112,500 to international initiatives for a total of \$4,684,761 in conservation and other mission program funding.

While the sale of special permits and tags resulted in \$2.7 Million in conservation funding, more than \$1.9 Million in FY2015-16 mission directed funding was from operational dollars. These funds were raised through WSF fundraising initiatives such as our Take One - Put One Back program, our giving societies, Conservation Revolving Fund grants from partner foundations, organizations and individuals, Ensuring the Future of Wild Sheep campaign gifts and of course, our record 2016 convention.

Incredibly, WSF accomplished this mission-focused success while also executing a relocation of our World Headquarters from Cody, Wyoming to Bozeman, Montana – a move that has already paid great short-term rewards and will ensure long-term dividends in improved staff productivity, efficiencies, and mission effectiveness.

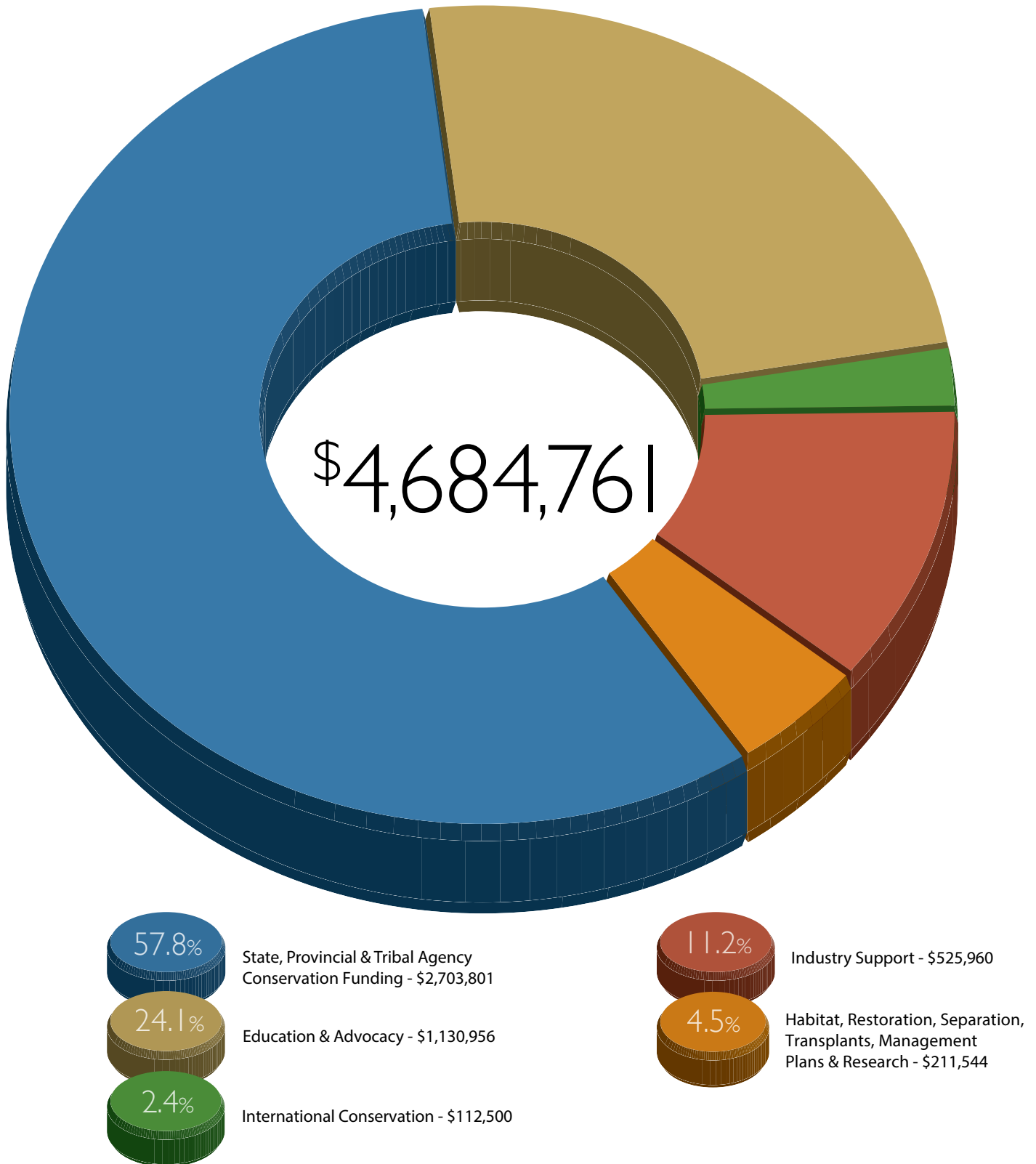
We have matured our North American Conservation Strategy, fully aligned our Legislative Affairs Strategy to help achieve our convention objectives, and continue to focus on operational excellence to achieve our corporate Vision.

Fellow WSF members, we are poised for continued success in FY2016-17.

Thank you. It is a privilege to serve our membership alongside the most dedicated staff and talented board in the conservation community.

2015-2016 FISCAL YEAR MISSION PROGRAM FUNDING

JULY 1, 2015 - JUNE 30, 2016



STATE, PROVINCIAL & TRIBAL AGENCY CONSERVATION FUNDING

Alaska Department of Fish & Game.....	\$105,700
Alberta Ministry of Environment.....	\$146,700
Arizona Department of Fish & Game.....	\$146,700
AZ Antelope Foundation.....	\$420,000
Baja - Ejido Bonfil (El Vizcaino Biosphere).....	\$39,000
British Columbia Ministry of Forest, Lands & Natural Resource Operations.....	\$144,500
California Department of Fish & Wildlife.....	\$156,750
Carmen Island - Desert Sheep Program.....	\$69,750
CEMEX - Desert Sheep Program.....	\$5,500
Chihuahua - DBHS Program.....	\$58,500
Colorado Parks & Wildlife.....	\$102,600
Idaho Department of Fish & Game.....	\$85,500
Montana Fish, Wildlife & Parks.....	\$274,500
Navajo Nation Fish & Wildlife.....	\$31,500
Nebraska Game & Parks Commission.....	\$16,800
Nebraska Game & Parks Commission (BHS C&A Summit Grant).....	\$36,000
Nevada Department of Wildlife.....	\$95,000
New Mexico Department of Game & Fish.....	\$285,750
Oregon Department of Fish & Wildlife.....	\$85,500
State, Tribal and Provincial Horn Plugs.....	\$10,426
Taos Pueblo Game & Fish Department.....	\$207,000
Utah Division of Wildlife Resources.....	\$54,625
Washington Department of Fish & Wildlife.....	\$135,000
Wyoming Governor's Big Game License Coalition.....	\$87,700
Yukon - Kluane First Nation.....	\$49,500
TOTAL	\$2,703,801

EDUCATION & ADVOCACY

Advertising - Mission & Education.....	\$43,060
Advertising - Social Media Education.....	\$9,000
Advertising - Television (USA & Canada).....	\$81,500
Cody Clay Crushers - Annual Tournament.....	\$2,500
DS/BHS Separation Advocacy Initiative.....	\$92,730
Life Member Scholarship - Sierra Amundson.....	\$5,000
Membership Services & Education.....	\$153,855
Museum of the Rockies.....	\$5,000
Navajo Nations Backpacks.....	\$750
WSF C&A Summit IX.....	\$25,150
WSF S.H.E.E.P. Youth Education Program.....	\$80,247
WSF/MidwayUSA Youth Wildlife Conservation Experience.....	\$32,164
WSF/MidwayUSA Youth Wildlife Conservation Experience Grant.....	\$600,000
TOTAL	\$1,130,956

INTERNATIONAL CONSERVATION

August L. Hormay Foundation International Sheep Workshops.....	\$10,000
Conservation Force - international wildlife initiatives.....	\$50,000
IUCN SULI Initiative.....	\$50,000
Professional Hunters Association of South Africa C&E Fund Grant.....	\$2,500
TOTAL	\$112,500

INDUSTRY SUPPORT

2% For Conservation - Founding Partner.....	\$20,000
Alaska Professional Hunters Association.....	\$10,000
Alaska WSF Program Grant.....	\$11,034
Alaska WSF - Permit Proceeds.....	\$44,700
Association of Mackenzie Mountain Outfitters.....	\$5,000
BC Trappers Association - Furbearers Education.....	\$2,500
Congressional Sportsman's Foundation.....	\$7,500
Colorado Parks & Wildlife - Sheep & Goat Education.....	\$1,000
Full Circle Video - Santa Catalina T&T Documentary.....	\$4,500
Guide/Outfitter Assoc. of BC - Wildlife Stewardship.....	\$20,000
Montana State University - MT Unit 500 Sheep Study.....	\$5,000
Nevada Bighorns Unlimited - Water Guzzler.....	\$5,000
Northern Guides & Outfitters Ungulate Enhancement Program.....	\$15,000
Northern Wild Sheep & Goats Council.....	\$2,000
Professional Hunters Association of South Africa Hunters Care.....	\$2,000
Program Grants - Thinhorn Initiative.....	\$45,000
Promotions - Industry Event Support.....	\$38,730
Promotions - Misc. Sponsorships.....	\$9,128
Promotions - Misc. Merchandise Donations.....	\$24,011
Public Lands/Water Access Association - Montana Access... Rocky Mountain Goat Alliance RM Goat Sex & Age Education Video.....	\$5,000
State, Provincial, Tribal, G&O, & Industry Booths.....	\$61,900
Travel - Board (Allocated to Programs).....	\$30,000
Travel - Committee Volunteer (Allocated to Programs).....	\$1,500
Travel - Staff (Allocated to Programs).....	\$70,000
USA Shooting Sponsorship.....	\$10,500
WAFWA Summer Meeting Sponsor.....	\$2,500
WAFWA 2016 Convention Meetings.....	\$7,257
Wounded Warriors Outdoors Program Sponsorship.....	\$56,200
Wyoming Outfitters & Guides Association.....	\$1,500
Yukon Outfitters Association.....	\$5,000
TOTAL	\$525,960

HABITAT, RESTORATION, SEPARATION, TRANSPLANTS, MANAGEMENT PLANS & RESEARCH

ADF&G Dall's Sheep Management Plan (AK).....	\$50,000
Desert Emergency Water Haul - Clipper Mountains (CA).. East Fork Salmon River BHS Habitat Use & Connectivity (ID).....	\$20,000
Harvest Records Analysis (Multi Jurisdiction).....	\$10,000
Limestone-Irving Domestic Sheep Allotment Complex (ID).....	\$40,000
Nevada Department of Wildlife Trust Fund Lone Mountain/Garfield Hills.....	\$2,150
Priscilla Peak Prescribed Burn, Lolo NF (MT).....	\$10,000
Professional Resource Advisory Board Support.....	\$12,678
Sowbelly Ranch (Voeller) Conservation Easement (NE).....	\$5,000
Sturgeon SCOTUS Appeal.....	\$5,000
WAFWA Disease Management Venture (Multi Jurisdiction).....	\$1,716
Wild Sheep Disease Research - WSU Veterinary School....	\$50,000
TOTAL	\$211,544

FY 2015-16 CONSERVATION PROGRAMS

NORTH AMERICAN CONSERVATION VISION 2020

In FY 2015-16, WSF completed and published its North American Conservation Vision 2020 planning document, identifying 6 priority goals for thinhorn sheep and 16 priority goals for bighorn sheep. This document will drive how WSF Committees (e.g., Conservation, Legislative Affairs, Development, Grant-In-Aid Funding, Chapter & Affiliate) will apply their efforts and resources to wild sheep conservation and management over the next 4 years in North America. The N.A. CV2020 is a dynamic document that will be updated, augmented, and improved as science, environmental, and social realities evolve, and as budgets allow.

WILD SHEEP & MOUNTAIN GOAT MANAGEMENT ASSISTANCE, NORTH AMERICA AND BEYOND

In FY 2015-16, WSF contributed over \$96,000 toward a variety of projects benefiting wild sheep and mountain goats, ranging from telemetry studies in Idaho and Nevada to horn plugs and statistical analyses of west-wide ram harvest data, from predator management in New Mexico and British Columbia to bighorn sheep habitat improvements in Nebraska, and from argali genetics work in Tajikistan to inventory flight time in Montana. WSF actively engaged our agency partners in multiple facets of wild sheep conservation, particularly interfacing with the Western Association of Fish and Wildlife Agencies (WAFWA).



FY 2015-16 CONSERVATION PROGRAMS

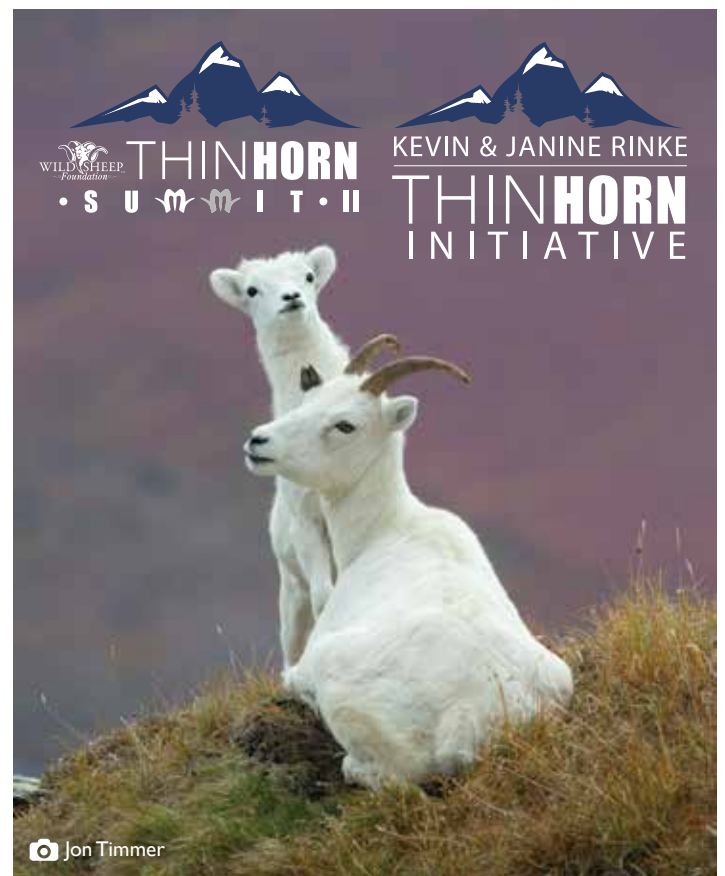
HABITAT ENHANCEMENT/ LAND PROTECTION

In FY 2015-16, WSF contributed \$45,000 toward water development in Nevada, emergency water hauling in the California desert, a conservation easement to protect bighorn sheep habitat in northwest Nebraska, and prescribed burning in northwest Montana. The WSF Board of Directors and WSF staff volunteered time and manpower to assist the Fraternity of the Desert Bighorn with construction of the Hidden Springs guzzler, outside of Las Vegas.



THINHORN SHEEP INITIATIVE

In FY 2015-16, WSF continued our Thinhorn Sheep (THS) Initiative with ongoing support from Kevin and Janine Rinke. Six priority goals for Dall's sheep and Stone's sheep were identified for inclusion in WSF's North American Conservation Vision 2020 document, and the WSF Board finalized a commitment to host Thinhorn Sheep Summit II in Anchorage, Alaska in April 2017.



FY 2015-16 CONSERVATION PROGRAMS

TRAP & TRANSPLANT

In FY 2015-16, WSF committed \$4,500 to produce a bighorn sheep capture and transplant video, further documenting WSF's 40-year tradition of "putting and keeping sheep on the mountain™".



EFFECTIVE SEPARATION BETWEEN DOMESTIC & WILD SHEEP

In FY 2015-16, WSF dedicated over \$200,000 to achieve temporal and spatial separation between domestic sheep and wild sheep. This included financial incentives for federal land grazing permittees to voluntarily waive their allotment permits back to the federal government. WSF also directly interacted with domestic sheep industry association representatives and Beltway lobbyists. WSF's conversations with state and federal agency leadership and "back-home" on-the-ground producers kept WSF actively involved on this vital U.S. and Canadian issue.



FY 2015-16 CONSERVATION PROGRAMS

UNGULATE ENHANCEMENT + HUNTER ACCESS

In FY 2015-16, WSF contributed \$107,500 toward ungulate enhancement and hunter access programs in Alaska, British Columbia, Yukon Territory, the Northwest Territories, multiple western states, and South Africa.



WILD SHEEP CONSERVATION ADVOCACY & EDUCATION

In FY 2015-16, WSF committed \$230,500 to promote wild sheep conservation and management and access for hunting, and to help deliver the message about the role hunters and anglers have played in fish and wildlife management for the past 80 years.



Shane Mahoney - Conservation Visions Inc.

DISEASE RESEARCH & SURVEILLANCE

In FY 2015-16, WSF contributed \$50,000 to ongoing wild sheep disease research at Washington State University, as Dr. Tom Besser assumed the Rocky Crate WSF Endowed Chair for Wild Sheep Disease Research. In addition, WSF funded \$7,000 toward a collaborative wild sheep disease management effort led by the WAFWA Wild Sheep Working Group and the WAFWA Wildlife Health Committee.



Dr. Tom Besser - WA State University





TAKE ONE - PUT ONE BACK

The TAKE ONE - PUT ONE BACK (TOPOB) Program that launched in 2014 has experienced tremendous growth this year, surpassing the half-million-dollar mark in total funding since inception.

During CY 2016 the TOPOB Program had 38 donors with contributions totaling an incredible \$272,500 - funding that was part of the nearly \$1 Million of WSF discretionary program funding of the \$4.6 Million in total Mission program funding during the year.

PROGRAM CONCEPT

The cost to put one sheep back on the mountain was estimated at \$4,700 by WSF Conservation Director Kevin Hurley, as follows:

- Net-gun Trap & Transplant ≈ \$800
- Diagnostic Lab & Disease Testing ≈ \$400
- Store on Board GPS collar ≈ \$3,500
- **Total ≈ \$4,700**

WSF members make a \$5,000 tax-deductible donation to WSF to “put one back” when they buy a permit or a sheep hunt, draw a special sheep permit, take a sheep or just want to assure the future of wild sheep.

Funds raised are dedicated to WSF Conservation initiatives to accomplish our Purpose “To Put and Keep Wild Sheep on the Mountain™”.

TOPOB donors who have “put back” one or multiple sheep are recognized during WSF’s Sheep Show™ Legacy Night and Grand Finale banquets.

WSF salutes the very generous Take One - Put One Back donors who have raised over \$500,000 of dedicated funding to not only put wild sheep on the mountain, but keep them there!

FY 2015-16 TAKE ONE - PUT ONE BACK PROJECT LIST

- DESERT EMERGENCY WATER HAUL, CLIPPER MOUNTAINS (CA)
- EAST FORK SALMON RIVER BHS HABITAT USE & CONNECTIVITY (ID)
- BIGHORN & THINHORN SHEEP HARVEST RECORDS ANALYSIS (MULTI-JURISDICTION)
- LIMESTONE – IRVING DOMESTIC SHEEP ALLOTMENT COMPLEX RETIREMENT (ID)
- LONE MOUNTAIN/GARFIELD HILLS BHS STUDY (NV)
- MONTANA STATE UNIVERSITY – MT HUNT DISTRICT 501 BHS STUDY
- NEVADA BIGHORNS UNLIMITED – WATER GUZZLER
- NORTHERN GUIDES & OUTFITTERS ASSOCIATION UNGULATE ENHANCEMENT (BC)
- PRISCILLA PEAK PRESCRIBED BURN, LOLO NF (MT)
- SOWBELLY RANCH (VOELLER) CONSERVATION EASEMENT (NE)
- WAFWA ADAPTIVE DISEASE MANAGEMENT VENTURE (MULTI-JURISDICTION)



2014 TOPOB DONORS

- BUCK BUCKNER
- WALT CORAM
- DENIS DALE
- JEFF & JANN DEMASKE
- MARC & CHERYL HANSEN
- KEVIN HURLEY 🐾🐾🐾
- CHRISSIE & JOHN JACKSON
- DOUG LEECH
- RICK & LINDA MURPHY
- DOUG & SHELLY SAYER 🐾🐾
- KEVIN & TUESDY SMALL
- JIM & PAULA WILSON
- GARY & PENNY YOUNG
- RUSS & DEBI YOUNG

TOTAL = \$85,000

2015 TOPOB DONORS

- STAN & PAMELA ATWOOD
- BOOKER
- JOHN BRELSFORD
- NORBERT BREMER
- STEVE & JACKIE BRUGGEMAN 🐾🐾
- RON & BILLI CAREY
- WALT CORAM 🐾🐾🐾🐾
- GUINN & BETSY CROUSEN
- MONTY & BECKY DAVIS 🐾🐾🐾🐾🐾
- JOHN & ANN DIEDRICH
- KEVIN HURLEY
- GUS MAXFIELD
- ERIC & SUSANNE MOLAND
- JEREMY PAGE 🐾🐾
- SEAN PAXTON
- RICHARD PIERCE
- DAVID PRITCHARD
- GEOFF ROWLEY 🐾🐾🐾
- ROGER SEGEBRECHT
- DOUG & SHELLY SAYER
- SITKA GEAR
- KEVIN & TUESDY SMALL
- GRAY & KELLI THORNTON
- DAVE TURCHANSKI
- JIM & SHAINA WARNER
- DARRYL WILLIAMS
- GARY & PENNY YOUNG

TOTAL = \$185,000

2016 TOPOB DONORS

- ANONYMOUS
- PAMELA ATWOOD
- BEST OF THE WEST
- JERRY & AMY BRENNER 🐾🐾
- STEVE & JACKIE BRUGGEMAN
- BUCK BUCKNER
- TIM & REED BURRES
- BETSY CROUSEN
- HARV DETHLEFS
- CHRIS DIANDA 🐾
- MIKE DIANDA
- EVON D & JACK H KECK FOUNDATION
- STEVE FIELD
- GOABC
- MARC & CHERYL HANSEN 🐾🐾
- JIM & SUE HENS 🐾🐾
- TOM & DENISE HOFFMAN
- STEVE HORNADY 🐾🐾
- KEVIN & KYLE HURLEY
- KAAN KARAKAYA
- MICHAEL KINNEY
- KYLE & JOANNE MEINTZER
- JASON RADAKOVICH
- KEVIN & JANINE RINKE
- DOUG SAYER
- SHELLY SAYER 🐾🐾
- ALBERT SEENO 🐾🐾🐾🐾🐾
- ROGER SEGEBRECHT 🐾🐾🐾🐾
- SITKA GEAR
- KEVIN & TUESDY SMALL
- DANIEL SMITH
- RENEE SNIDER
- WILLIAM "BUCK" & ANGELA THOMPSON
- KELLI THORNTON
- CHARLES TROVER
- WARREN WILDLIFE GALLERY 🐾🐾
- WEATHERED STONE GOOD WORKS FUND 🐾🐾🐾🐾
- JARED WIRE

TOTAL = \$272,500



SPECIAL NOTE:
 🐾 DENOTES THE QUANTITY OF WILD SHEEP PUT BACK (WHEN MORE THAN ONE)



WSF ON THE MOVE!

The 2015-16 fiscal year for WSF was historic. The 2016 “Sheep Show™” marked a “three-peat” of back to back to back record conventions enabling WSF to direct more than \$4 Million to mission funding programs for the third consecutive year. The year also marked a relocation of the WSF headquarters in a strategic move to position the foundation for continued growth and advancement of WSF’s mission.

Following an extensive two-year process evaluating the best location, the WSF Board of Directors unanimously approved moving the headquarters from Cody, Wyoming – where it had been located for the past 33 years – to Bozeman, Montana due to five primary dynamics:

#1 Access to a young, vibrant labor force of wildlife managers and marketers as potential WSF’s full & part-time staff and seasonal interns to build WSF mission capacity.

#2 Proximity to a world-class university (Montana State University) where WSF has established a scholarship for wild sheep biologists and developed exceptional relationships with department chairs.

#3 As a growing conservation non-profit, Bozeman offers WSF a dynamic mid-size city for local membership growth and staff professional growth and enrichment.

#4 Bozeman represents Montana’s fastest growing economy, is the epicenter of the outdoor industry, and is home to many WSF strategic partners.

#5 Access to an interstate highway and major airport with direct access/flights to the west and east coast.

WSF President and CEO Gray N. Thornton said of the move, “It is time to take WSF to the next level. Bozeman provides the business, educational, social and philanthropic environment to accomplish this goal while offering

quality of life for our staff that is second to none. We are thrilled to call Bozeman our new home.”

To ensure that operations and member service levels were maintained during the move and that the 2016 and 2017 conventions were not impacted, the relocation was scheduled for late April/early May. It was a success, with WSF now housed in a 7,000 square foot leased facility in the Four Corners area of Bozeman. Our new headquarters provides an outstanding professional base where the foundation can continue growing while maintaining its emphasis on the Vision, Purpose, Mission and Values of WSF.

A historic year, historic move and a new era for the Wild Sheep Foundation!



YWCE

YOUTH WILDLIFE CONSERVATION EXPERIENCE

S.H.E.E.P.

SHOOTING • HUNTING • ETHICS • EDUCATION • PROGRAM

WSF's youth education is embodied by two unique programs: Y.W.C.E. and S.H.E.E.P. The Youth Wildlife Conservation Experience (Y.W.C.E.) occurs during January's Sheep Show™ in Reno, NV. The Shooting, Hunting & Ethics Education Program (S.H.E.E.P.) is an educational outreach program that continues nationwide throughout the year.

Funding for youth education was provided in Fiscal Year 2015-16 from two sources: the MidwayUSA Foundation and the Cabela's Outdoor Fund. The MidwayUSA Foundation supported Y.W.C.E. The Cabela's Outdoor Fund provided support S.H.E.E.P.

WSF's 2015-16 fiscal year saw its fourth year in a row increase in the number of youth impacted by both events, reaching a total of 9,777 young people, an 18% increase over the prior year. In all, WSF presented 56 regional-style S.H.E.E.P. events and one Y.W.C.E. event during the national convention.

The three-day Y.W.C.E. involved 22 different active-participation stations at the Sheep Show™ exhibit hall. The event was open to local school students for the first two days and, on the third day, to the general public. On the final day, the Y.W.C.E. reached an all-time one-day record of 728 youth participating. A total of 1,159 youth attended over the three days of Y.W.C.E.

In late 2015, WSF worked with the MidwayUSA Foundation to create a WSF Youth Endowment account specifically for youth programs and education. WSF provided a program grant of \$600,000 (using Y.W.C.E. restricted funds) to fund the MidwayUSA Foundation youth account. The WSF grant was doubled to \$1.2 million through a MidwayUSA Foundation matching program, with a generous donation from Larry and Brenda Potterfield. Under the new agreement with the MidwayUSA Foundation, WSF will receive annually a grant of 5% of the account balance (~\$60,000) to support the Y.W.C.E., with extra funds being applied to

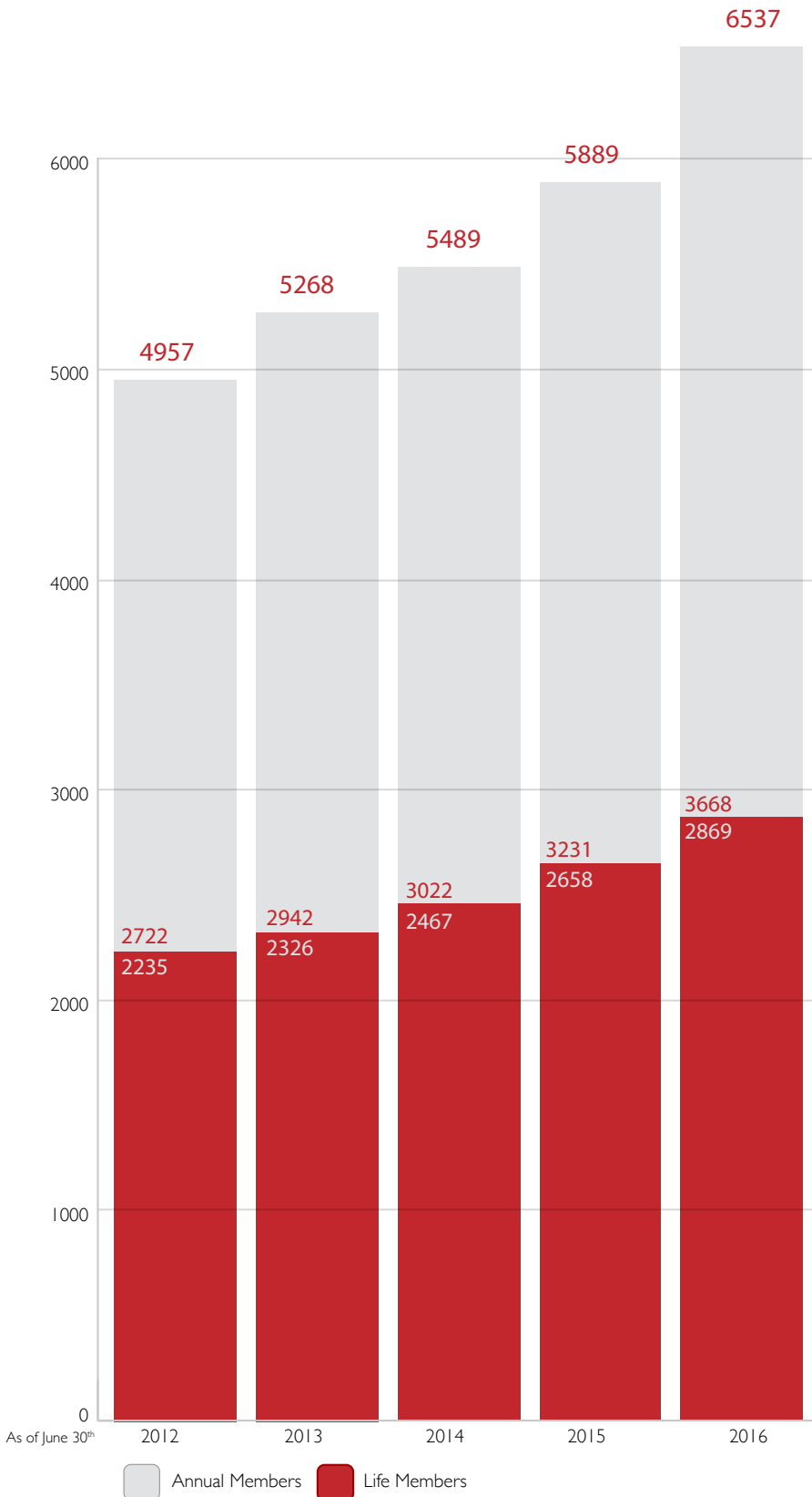
other youth initiatives and programs, including S.H.E.E.P.

Meanwhile, WSF received a \$69,900 grant from the Cabela's Outdoor Fund dedicated specifically to S.H.E.E.P. outreach programs. In FY 2015-16, the number of S.H.E.E.P. events across the country grew by 11%. These 51 events focused on hunting and shooting, conservation and healthy outdoor recreation. In addition, WSF helped sponsor three additional regional youth clubs and programs and assisted with two youth competitive shoots. In total, S.H.E.E.P. had a direct impact on 8,618 young people.

WSF extends its gratitude to the Cabela's Outdoor Fund, the MidwayUSA Foundation and the Potterfield family for making FY 2015-16 a success for youth shooting sports and conservation. These WSF youth programs will assure the future of our outdoor lifestyle and hunting traditions while inspiring a new generation of hunter-conservationists.



WSF MEMBERSHIP STATISTICS



WSF's membership grew at an accelerated pace surpassing 6,500 members and reaching the 2869 mark for Life Members! Life Members make up the very core of the Wild Sheep Foundation. Their unwavering support has enabled WSF to continue to focus and fund mission programs throughout our history. WSF salutes our Life Members - we are indebted to you all!



The Summit Life Membership takes that exceptional commitment and support of the life member to an even higher level. Life Member and Summit Life Member dues are directed to the WSF Life Member Fund to maintain a reserve, to service all life members in perpetuity, as well as fund annual Life Member conservation and education initiatives. The Life Member Fund is one of the funds included in *WSF Temporarily Restricted Assets as identified on p.25*. Since inception, 172 Summit Life Members have joined through June 30, 2016.



The Less Than One Club is for current or new members who have never taken a wild sheep ram. A \$25 fee in addition to WSF membership dues allows access to this exclusive club. This is one club you'll be proud to be kicked out of!





LIST OF SUMMIT LIFE MEMBERS THROUGH JUNE 30TH 2016
MEMBERS JOINING IN FY 2015-16 ARE SHOWN IN **BOLD**

1	Denis Dale	45	David Price, Jr.	89	Gary Scheffen	132	Brandon Wynn
2	Bradley Dale	46	Mark Fear	90	Kevin Rinke	133	Shad Hulse
3	Rick Garzoli, Jr.	47	Jason Price	91	Matt Tomseth	134	April Hulse
4	Dick Rohrer	48	Andreas Gruson	92	Terry Rathert	135	Zeke Stanton
5	Jay Evers	49	Glenn Bailey	93	Glen Pyne	136	George Harms
6	Kyle Meintzer	50	Peter Treboldi	94	Cheryl Hansen	137	Ronald Sherer
7	Gray Thornton	51	David B. Reed	95	Jack Craig	138	Cabot Pitts
8	Kelli Thornton	52	John Lake	96	Mark Watkins	139	Dan Kluth
9	Paula Wilson	53	Eric Johnson	97	Gary Young	140	Kevin Gilbert
10	Jim Wilson	54	Denise Lowrie	98	Ron Dube	141	Brian Solan
11	Joanne Meintzer	55	Ross Heilman	99	Larry Jenkins	142	Brad Baryenbruch
12	Marc Hansen	56	Tom Hoffman	100	Jason Radakovich	143	William Mitchell
13	Jim Craig	57	Pete Mowbray	101	Richard Haykel	144	Kyle Krause
14	Leann Craig	58	Harve Dethlefs	102	Wayne Bowd	145	Craig Willis
15	Karen Gordon	59	Michael Wieck	103	Guinn Crousen	146	Charles Trover
16	Ryan Foutz	60	Cory Smith	104	Betsy Crousen	147	Michael Dickens
17	Brett Jefferson	61	Lee Livingston	105	R. Douglas Yajko	148	Alan Higham
18	Doug Sayer	62	Roger Flahive	106	JC Spies	149	Cole Kramer
19	Shelly Sayer	63	Dale Hislop	107	Tim Van Der Weide	150	Steve Bruggeman
20	Ron Carey	64	Jeff Peracchi	108	Roger Kenner	151	Jack Frost
21	Mike Borel	65	David Harrison	109	John Brelsford	152	Grant Adkisson
22	Kevin Kehoe	66	Jeff Martin	110	George Barney	153	Alan Day
23	Kevin Hurley	67	William N. Cullins	111	Richard J. Pierce	154	Larry Meyer
24	John W. Harris	68	Edward Spies	112	G. Thomas Lang	155	John Jackson, III
25	Tricia Hosch-Hebdon	69	Arthur Ebersberger	113	Josh Capalbo	156	Derek Blake
26	Joe Sheehey	70	John Baker	114	Steve Opat	157	Glen Landrus
27	Bryan Bartlett	71	Robert Manger	115	Richard Schenk	158	Rex Baker
28	Craig Nakamoto	72	Donna Gaugler	116	Gary Ingersoll	159	Rick Murphy
29	Jack Atcheson, Jr	73	Dale Gaugler	117	Olen Petznick	160	Joe Miloscovich
30	Billi Carey	74	David Pritchard	118	Ralph Wilkerson	161	Jesus Gutierrez
31	Robert Keagy	75	George Vandenberg	119	Scott Brown	162	Mark 'Oz' Geist
32	A.C. Smid	76	Pauline Rupp	120	Mychal Murray	163	Chris Klineburger
33	Sean Paxton	77	Lanny Rominger	121	Kevin Small	164	Jason Peak
34	Larry McGovern	78	Harold Grinde	122	Reed Burres	165	Louis Breland
35	Mark Pickering	79	Larry Lewis	123	Evon D. & Jack H. Keck Foundation	166	Tim Shinabarger
36	Darryl Williams	80	Gregory Stube	124	Brad Morlock	167	Roxane Shinabarger
37	Bob Brocchini	81	Cameron Foss	125	Butch Kufiak	168	Stewart N. Isley
38	Monty Davis	82	Tom Foss	126	Mark Milleg	169	Chuck Middleton
39	Jerry Chase	83	Adam Foss	127	Daryll Hosker	170	Bob Cassell
40	Susan Slaugh	84	Sid Strzok	128	Mike Mechenbier	171	Andrew Pratt
41	Brian Palmieri	85	Michael Carpinito	129	Kenneth Barr	172	Dyrk Eddie
42	Buddy Duvall	86	Mike Carpinito	130	Ben Hollingsworth, Jr.	222	Victor Clark
43	Becky Davis	87	Ron Raboud	131	Ken Kitzmann		
44	Ron Pomeroy	88	Jeff Lindgren				



“I jumped at the opportunity to elevate from Life Member to Summit Life Member status, seeing it as a natural progression for all devoted and active members of the Wild Sheep Foundation to continue to support our passion. This new status of membership offers all levels of WSF enthusiasts a chance to lend increased support to the Foundation that allows every hunter/conservationist the opportunity to experience the thrill of the animals we all love.”

David B. Reed (TX)

“The Wild Sheep Foundation clearly is dedicated to true conservation of sheep habitat and the adoption of sound environmental policies that will ‘Keep Sheep on the Mountain.’ Being a Life and Summit Life member is a validation of my commitment to the future of conservation for our children’s children to enjoy God’s greatest creation, the wild outdoors.”

John Lake (CA)



“Anyone who is a life member of any conservation organization will eventually be asked to upgrade that membership in some way. I have been asked by many but only chose to upgrade as a WSF Summit Life Member. Why? Because the Wild Sheep Foundation is the best steward of my conservation dollars and I couldn’t be prouder to support the mission in any way possible. If you’re a WSF Life Member, you know I’m right. Please join me today as a Summit Life Member!”

Darryl Williams (CA)



“The Wild Sheep Foundation is a tremendous organization which is truly dedicated to conservation. As a hunter, I chose to become a Summit Life Member to demonstrate my continued support of WSF and to help in our mission of putting and keeping sheep on the mountain.”

Denise Hoffman (CO)





ENSURING THE FUTURE OF WILD SHEEP

During the 2015-16 fiscal year, the Ensuring the Future of Wild Sheep (ETFOWS) campaign recorded \$6,524,500 in commitments, of which \$1,219,654 was received in cash. Since inception, the ETFOWS campaign has commitments totaling \$13,566,188 of which \$2,996,156 has been received through June 30, 2016. Contributors to the ETFOWS campaign are recognized through three WSF giving societies - Marco Polo Society™, Chadwick Ram Society™ and the Legacy Society.

In 2013, WSF launched ETFOWS to include tax and estate planning opportunities, counsel and advice, major

gifts, and giving societies to raise the funds required to ensure the future of the wild sheep resource by directing even more dollars to wild sheep restoration, repatriation and conservation. Our vision is to build a series of funds that with a targeted annual off-take of ~4% will allow WSF to direct 100% of our convention fundraising to mission programs. Our goal is \$5 to \$6 million annually in mission-focused Grant-In-Aid and additional mission funding.

The Marco Polo Society™ (MPS) was established in 2008 as WSF's premier giving society, recognizing WSF donors of \$100,000

or more. During the 2015-16 fiscal year the Marco Polo Society™ welcomed four new members bringing the total number of MPS members to 48.

The Chadwick Ram Society™ (CRS) was created in 2013 with five benefactor levels ranging from \$2500 to \$50,000. Benefactor levels can be "upgraded" within the Chadwick Ram Society™ as well as to the Marco Polo Society™. During the 2015-16 fiscal year, nine new members joined the Chadwick Ram Society™ bringing the total number of CRS members to 72.



WSF SALUTES OUR LEGACY SOCIETY™ MEMBERS JANUARY 2013, - JUNE 30 2016

LEGACY SOCIETY MEMBERS JOINING DURING
FY 2015-16 ARE SHOWN IN **BOLD**

Jack, Jr. & Cindy Atcheson (MT)
Mike Borel (CA)
Howard & Mary Deters (MN)
The William H. Donner Foundation, Inc
Thomas Grimes (MT)
The Estate of Robert B. Johnson
John R. & Mary Ann Justus (TX)
Kyle & Joanne Meintzer (NV)
Chuck Middleton (ID)
David Mode (GA)

Kevin & Janine Rinke (MI)
Louis & Pauline Rupp (MO)
SCI Foundation - Hunter Legacy Fund (HLF-100)
Jim Travis (AZ)
Tim & Ruth Van Der Weide (IA)
Anonymous
Cabela's Outdoor Fund (NE)
Dr. Robert W. & Cynthia Cassell (AK)
Buddy DuVall (MT)
Roger McCosker (NV)

Note: Legacy Society Members joining after June 30, 2016 are recognized in the Wild Sheep™ magazine and website and will be listed in the FY 2016-17 Annual Report.



MARCO • POLO • SOCIETY™

WSF SALUTES OUR MARCO POLO SOCIETY™ MEMBERS
THROUGH JUNE 30, 2016

MPS MEMBERS JOINING DURING
FY 2015-16 ARE SHOWN IN **BOLD**

1. John & Jane Babler (MN)
2. Dan & Kathy Boone (TX)
3. Russ & Debi Young (TX)
4. Walt & Joan Coram (TX)
5. Guinn & Betsy Crousen (TX)
6. Scott Jesseman (IL)
7. Denis & Diane Dale (AB)
8. Gary & Penny Young (WV)
9. Kevin & Janine Rinke (MI)
10. Oscar & Valerie Carlson (MN)
11. Mark & Janice Dickson (CA)
12. Monty & Becky Davis (TX)
13. Lee & Penny Anderson (FL)
14. Ron & Billi Carey (AB)
15. Steve & Jackie Bruggeman (MN)
16. Larry & Jane Hunts (OR)
17. Steve & Jill Hornady (NE)
18. George & Kelly Lawrence (WA)
19. Marc & Cheryl Hansen (PA)
20. Doug & Shelly Sayer (ID)
21. Richard & Linda Murphy (NM)
22. Larry & Brenda Potterfield (MO)
23. Alan Young (YT)
24. Kevin Hurley (MT)
25. Jim & Sue Hens (NY)
26. Gary & Yvonne Rigotti (OR)
27. Clayton & Modesta Williams (TX)
28. Tom & Denise Hoffman (NY)
29. Jeff & Jann Demaske (CO)
30. Ron & Vicki Pomeroy (WY)
31. Jerry & Amy Brenner (NC)
32. Chris & Jaimie Dianda (NV)
33. Christopher Ring (TX)
34. Steven & Ardyce Whisler (MT)
35. Stanford & Pamela Atwood (CA)
36. The Olmstead Family (BC)
37. Jelindo & Sandee Tiberti (NV)
38. Anonymous
39. Alan & Barbara Sackman (NY)
40. The Fiedeldey Family (OH)
41. Shane & Angela Alexander (TN)
42. Ken & Anna Vorisek (AK)
43. Ronald S. Gabriel, M.D. (CA)
44. Ross & Nicole Jackson (CO)
45. **Roger Segebrecht (WI)**
46. **Kevin & Tuesdy Small (CA)**
47. **J. Alain Smith (WA)**
48. **Dean & Paige Darby (MI)**

Note: Marco Polo Society Members joining after June 30, 2016 are recognized in the Wild Sheep™ magazine and website and will be listed in the FY 2016-17 Annual Report.



YOU CAN HELP WSF PUT AND KEEP SHEEP ON THE MOUNTAIN™ BY JOINING THE CHADWICK RAM SOCIETY!

Donations can be made to the Endowment Fund, Conservation Fund, our annual Convention and/or Operations to fund specific programs and initiatives. Chadwick Ram Society™ members are recognized with a stunning embroidered badge displaying their Copper, Bronze, Silver, Gold or Platinum Benefactor Level. Members may also “upgrade” their Benefactor levels within the Chadwick Ram Society™ as well as to the premier Marco Polo Society™.

For more information on the Chadwick Ram Society™, the Marco Polo Society™ or the Ensuring the Future of Wild Sheep campaign, contact WSF President & CEO Gray N. Thornton, Executive VP of Development Buddy DuVall, or visit our website.

We cordially invite you to join the Chadwick Ram Society™ and help Ensure the Future of Wild Sheep!



CRS MEMBERS JOINING DURING
FY 2015-16 ARE SHOWN IN **BOLD**

WSF SALUTES OUR CHADWICK RAM SOCIETY™ MEMBERS

PLATINUM - \$50,000

1. Kyle & Joanne Meintzer (NV)
2. Bob & Steve Brocchini (CA)
3. Lanny S. & Susan Rominger (NM)
4. Larry & Emily Lewis (MI)
5. Jim Travis (AZ)
"In Memory of Jody Travis"
6. Mike & Dianna Goodart (CO)

GOLD - \$25,000

1. Darryl Williams & Cassie Shafer (CA)
2. Louis & Pauline Rupp (MO)
3. Kevin & Eileen Kehoe (AK)
4. Bob & Pam Keagy (CA)
5. **Tyrel Dutcher (TX)**

SILVER - \$10,000

1. Gray & Kelli Thornton (MT)
2. Ryan & Tiffany Foutz (UT)
3. Brett & Micki Jefferson (NV)
4. Stone Mtn. Safaris - Leif & Kellie Olsen (BC)
5. Allen & Michelle Findley (TX)
6. Daniel Hinz (WY)
7. Drs. Glen & Caroline Pyne (CA)
8. Richard J. Pierce (CA)
9. Eldon "Buck" Buckner (OR)
10. Doc Thurston, III (NC)
11. Rich & Frances Papapietro (CA)
12. Jim & Shaina Warner (ID)
13. Craig & Laureen Nakamoto (IA)
14. Allan Reishus (CO)
15. Breck & Holli Johnson (CO)
16. Robert & Arlene Hanson (AZ)
17. Jim & Paula Wilson (NJ)
18. Larry Diehl (VA)
19. Cole & Elaine Benton (WY)
20. Cory & Carrie Bengé (MT)
21. Denise A. Hoffman (NY)
22. Buddy DuVall (MT)
23. Pete & Bobbie Mowbray (VA)
24. James & Leann Craig (IN)
25. Mychal & Melissa Murray (TX)

26. A.C. & Melissa Smid (WY)
27. Charles & Denise Swanson (IL)
28. Darin & Tonya Fiedeldey (OH)
29. Alan C. Hayes (CA)
30. Karen Gordon (AK)
31. David & Kelly Reed (TX)
32. **Kenneth L. Barr (CA)**
33. **Joe & Mary Peachey (PA)**

BRONZE - \$5,000

1. Thomas Grimes (MT)
2. Glenn & Ann Kennedy (TX)
3. Jim & Alisia Stager (PA)
4. **Mike & Kathy Mechenbier (NM)**
5. **Paul & Janet Carter (MA)**
6. **Mike Borel (CA)**

COPPER - \$2,500

1. Dallas Strait (PA)
2. Beau Williams (WY)
3. Tom & LeAnna Fischer (ID)
4. Wayne & Diane Henderson (SD)
5. G. Latham Myers, II (WV)
6. Ben Lamb (MT)
7. Chuck Middleton (ID)
8. Brown & Kelli Delozier (TX)
9. Bill & Judy Slattery (CO)
10. Cyril & Carol Elsinger (IA)
11. John Link (WI)
12. Jeff & Sunna Furstenau (ND)
13. Bill Kiefer (ND)
14. Four Seasons Safaris New Zealand
Shane Johnston (NZ)
15. Rick & Heather Carosone (ID)
16. Morad Tahbaz (CT)
17. Darla Fiedeldey (OH)
18. David L. Mode (GA)
19. Jim & Gail Bernardin (WY)
20. **Greg Strait (PA)**
21. **Jeremy & Karen Chase (PA)**
22. **Dan Adler - Diamond Outfitters (AZ)**

Note: Chadwick Ram Society Members joining after June 30, 2016 are recognized in the Wild Sheep™ magazine and website and will be listed in the FY 2016-17 Annual Report.

INDEPENDENT AUDITOR'S REPORT

November 14, 2016

Board of Directors
Wild Sheep Foundation
Cody, WY 82414

We have audited the accompanying financial statements of Wild Sheep Foundation, which comprise the statements of financial position as of June 30, 2016 and 2015, and the related statements of activities and cash flows for the years then ended, and the related notes to the financial statements.

Management's Responsibility for the Financial Statements

Management is responsible for the preparation and fair presentation of these financial statements in accordance with accounting principles generally accepted in the United States; this includes the design, implementation, and maintenance of internal control relevant to the preparation and fair presentation of financial statements that are free from material misstatement, whether due to fraud or error.

Auditor's Responsibility

Our responsibility is to express an opinion on these financial statements based on our audits. We conducted our audits in accordance with auditing standards generally accepted in the United States. Those standards require that we plan and perform the audit to obtain reasonable assurance about whether the financial statements are free from material misstatement.

An audit involves performing procedures to obtain audit evidence about the amounts and disclosures in the financial statements. The procedures selected depend on the auditor's judgment, including the assessment of the risks of material misstatement of the financial statements, whether due to fraud or error. In making those risk assessments, the auditor considers internal control relevant to the entity's preparation and fair presentation of the financial statements in order to design audit procedures that are appropriate in the circumstances, but not for the purpose of expressing an opinion on the effectiveness of the entity's internal control. Accordingly, we express no such opinion. An audit also includes evaluating the appropriateness of accounting policies used and the reasonableness of significant accounting estimates made by management, as well as evaluating the overall presentation of the financial statements.

We believe that the audit evidence we have obtained is sufficient and appropriate to provide a basis for our audit opinion.

Opinion

In our opinion, the financial statements referred to above present fairly, in all material respects, the financial position of Wild Sheep Foundation as of June 30, 2016 and 2015, and the changes in its net assets and its cash flows for the years then ended in accordance with accounting principles generally accepted in the United States.

Wipfli LLP

Wipfli LLP
Billings, Montana

FINANCIAL STATEMENTS

STATEMENTS OF FINANCIAL POSITION

June 30,

	<u>2016</u>	<u>2015</u>
Assets		
Current assets:		
Cash and cash equivalents	1,108,270	1,743,258
Convention and membership receivables	616,116	60,677
Merchandise inventories	51,802	32,918
Prepaid expenses	210,086	179,429
Total current assets	<u>1,986,274</u>	<u>2,016,282</u>
Fund and Trust - invested funds	1,551,156	1,825,813
Pledges receivable, net of discount	820,489	1,075,803
Land, building and equipment, net	107,952	69,647
Other assets	17,034	24,747
Total assets	<u>4,482,905</u>	<u>5,012,292</u>
Liabilities and Net Assets		
Current liabilities:		
Accounts payable and accrued expenses	93,904	440,483
Convention deposits and deferred revenue	413,375	617,173
Total current liabilities	<u>507,279</u>	<u>1,057,656</u>
Total liabilities	<u>507,279</u>	<u>1,057,656</u>
Net Assets:		
Unrestricted	1,910,135	2,208,455
Temporarily restricted	2,065,491	1,746,181
Total net assets	<u>3,975,626</u>	<u>3,954,636</u>
Total liabilities and net assets	<u>4,482,905</u>	<u>5,012,292</u>

FINANCIAL STATEMENTS

STATEMENT OF ACTIVITIES – FOR THE YEAR ENDED JUNE 30, 2016

	Unrestricted	Temporarily Restricted	Total
Support and revenue:			
Proceeds from annual convention	6,355,510	0	6,355,510
Less: Direct costs	2,420,314	0	2,420,314
Net convention revenue	3,935,196	0	3,935,196
Donations	929,408	219,500	1,148,908
Dues and memberships	184,634	239,315	423,949
Publication revenue	219,332	0	219,332
Investment income	192	150,159	150,351
Net assets released from restriction	132,201	(132,201)	0
Net unrealized loss on investments	0	(157,463)	(157,463)
Total support and revenue	5,400,963	319,310	5,720,273
Program service expenses:			
Wild sheep conservation and education	4,287,854	0	4,287,854
Membership services	396,907	0	396,907
Total program service expenses	4,684,761	0	4,684,761
Support service expenses:			
Fundraising	241,314	0	241,314
Membership development	270,165	0	270,165
Administration	853,903	0	853,903
Total support service expenses	1,365,382	0	1,365,382
Other income (expense):			
Gain of sale of building	351,934	0	351,934
Loss on disposal of assets	(1,074)	0	(1,074)
Total other income	350,860	0	350,860
Total increase (decrease) in net assets	(298,320)	319,310	20,990
Net assets - beginning of year	2,208,455	1,746,181	3,954,636
Net assets - end of year	1,910,135	2,065,491	3,975,626

*Complete audited financial statements are available at the WSF headquarters.



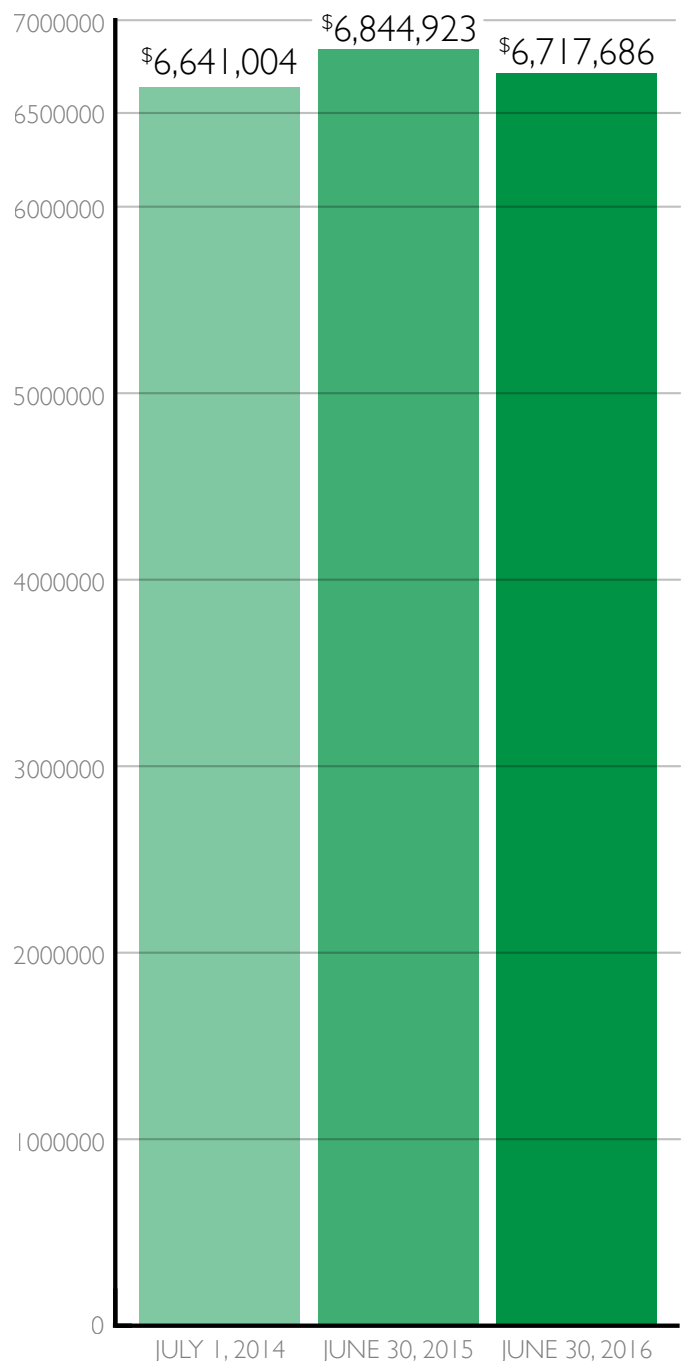
Beginning Balance: \$6,844,923 (July 1, 2015)
 Endowment Additions: \$295,169
 Loss: (\$107,912)
 Less: 4% off-take for Programs (\$265,000)*
 Less: Investment & other fees (\$49,494)
 Ending FY Endowment Balance: \$6,717,686 (June 30, 2016)

WILD SHEEP LEGACY FOUNDATION ACCOUNT BALANCE

*The annual 4% off-take was directed to help fund more than \$1,000,000 of WSF Mission Programs and Grant-In-Aid funded from Operations during the year. See FY 2015-16 Mission Program Funding Summary (pp. 3&4) for programs funded.

Note: In November 2013 a separate 501(c)3 Supporting Organization was formed called the Wild Sheep Legacy Foundation (WSLF) to solely support the Mission and Purpose of the Wild Sheep Foundation. The Board of Trustees of WSLF are all Life Members of WSF.

The WSF Endowment Fund assets were transferred from the Wild Sheep Foundation to the Wild Sheep Legacy Foundation to manage and invest in November of 2013.



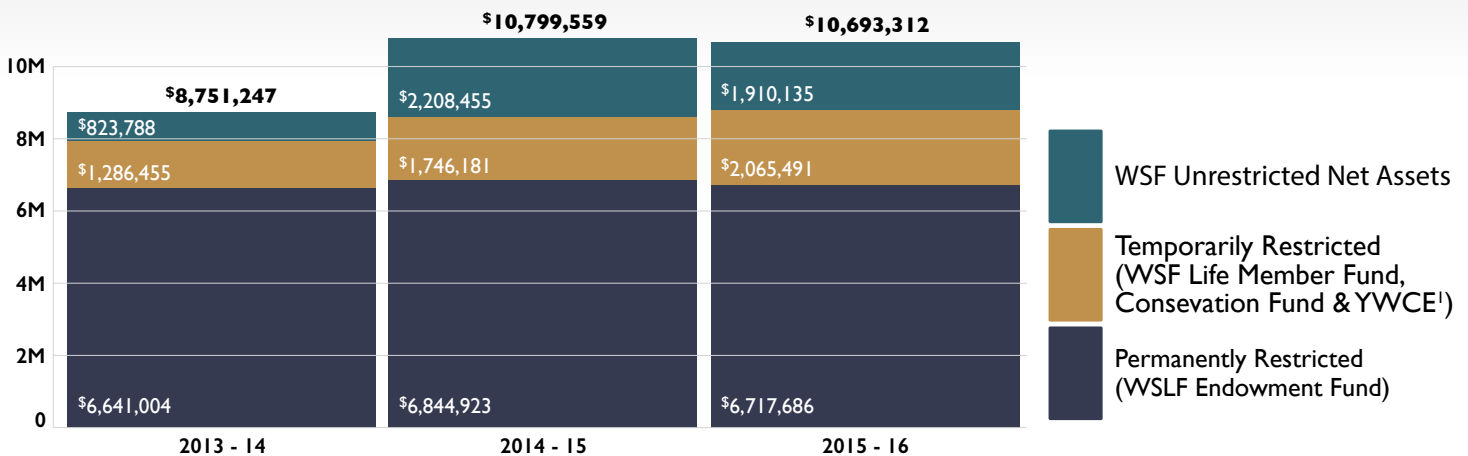


CONSOLIDATED STATEMENT OF FINANCIAL POSITION
 WILD SHEEP FOUNDATION & WILD SHEEP LEGACY FOUNDATION
 JUNE 30, 2016



Assets	
Current assets:	
Cash and cash equivalents	\$1,111,420
Convention and membership receivables	616,116
Merchandise inventories	51,802
Prepaid expenses and other assets	<u>210,086</u>
TOTAL current assets	1,989,424
Fund and Trust - invested funds	1,551,156
Endowment - invested funds	6,714,536
Pledges receivable, net of discount	820,489
Land, building and equipment, net	107,952
Other assets	<u>17,034</u>
TOTAL assets	<u>\$11,200,591</u>
Liabilities and Net Assets	
Current liabilities:	
Accounts payable and accrued expenses	93,904
Convention deposits and deferred revenue	<u>413,375</u>
TOTAL current liabilities	507,279
TOTAL liabilities	<u>507,279</u>
Net assets:	
Unrestricted	1,910,135
Temporarily restricted	2,065,491
Permanently restricted	<u>6,717,686</u>
TOTAL net assets	<u>10,693,312</u>
TOTAL liabilities and net assets	<u>\$11,200,591</u>

CONSOLIDATED NET ASSETS OF WSF & WSLF

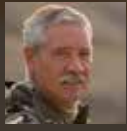


¹YWCE Fund (\$600,000 Grant to MidwayUSA Foundation – WSF Youth Acct., Dec. 2015)

WSF BOARD
OF DIRECTORS

WSLF BOARD
OF TRUSTEES

WSF STAFF



Doug Sayer
Chairman
Pocatello, ID



Marc Hansen
Vice Chairman
Chester Springs, PA



Brett Jefferson
Secretary
Las Vegas, NV



Chris Barker
Sannich, BC



Ron Carey
Calgary, AB



Ryan Foutz
North Salt Lake City, UT



Karen Gordon
Fairbanks, AK



Wayne Henderson
Lodgepole, SD



Glen A. Landrus
Clarkston, WA
Term Began May 1, 2016



Kyle Meintzer
Reno, NV
Term Expired April 30, 2016



Lanny Rominger
Albuquerque, NM



Gray N. Thornton
President/CEO
Editor in Chief Wild Sheep Magazine
Bozeman, MT



Jim Wilson
Franklin, NJ



Sierra Amundson
Board Intern
Wheatland, WY



Lee Anderson
Chair Emeritus
Naples, FL



Oscar Carlson
Chairman
Forest Lake, MN



Lanny Rominger
Vice Chairman
Albuquerque, NM



John Babler
Treasurer
Mahtomedi, MN



Robert Hanson
Secretary
Cave Creek, AZ



Steve Bruggeman
Shoreview, MN



Tom Foss
Calgary, Alberta



Marc Hansen
Chester Springs, PA



Roger McCosker
Reno, NV



Kevin Rinke
Bloomfield Hills, MI



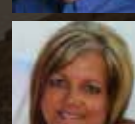
Doug Sayer
Pocatello, ID



Gray N. Thornton
President/CEO
Editor in Chief Wild Sheep Magazine
Bozeman, MT



Buddy DuVall
Executive Vice President of Development
Bozeman, MT



Terry Ziehl
Office Manager
Cody, WY



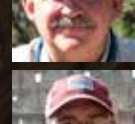
Kim Nieters
Auction Manager/Awards Coordinator
Cody, WY



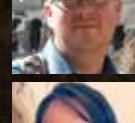
Becky Layne
Exhibits Manager/WSF Store Manager
Bozeman, MT



Kevin Hurley
Senior Conservation Director
Bozeman, MT



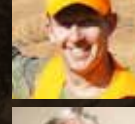
Justin Phillips
Graphic Design/Web Administrator
Cody, WY



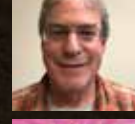
Marci Johnerson
Membership Manager
Bozeman, MT



Ryan Brock P.h.D
Youth Education Coordinator
Reno, NV



Kurt Alt
Staff Biologist
Bozeman, MT



Sam Sposito
Administrative Assistant
Bozeman, MT



Jamie Jones
Development Assistant
Bozeman, MT



John Morrison
WSF Intern
Bozeman, MT



412 Pronghorn Trail
Bozeman, MT 59718
406.404.8750
WildSheepFoundation.org

