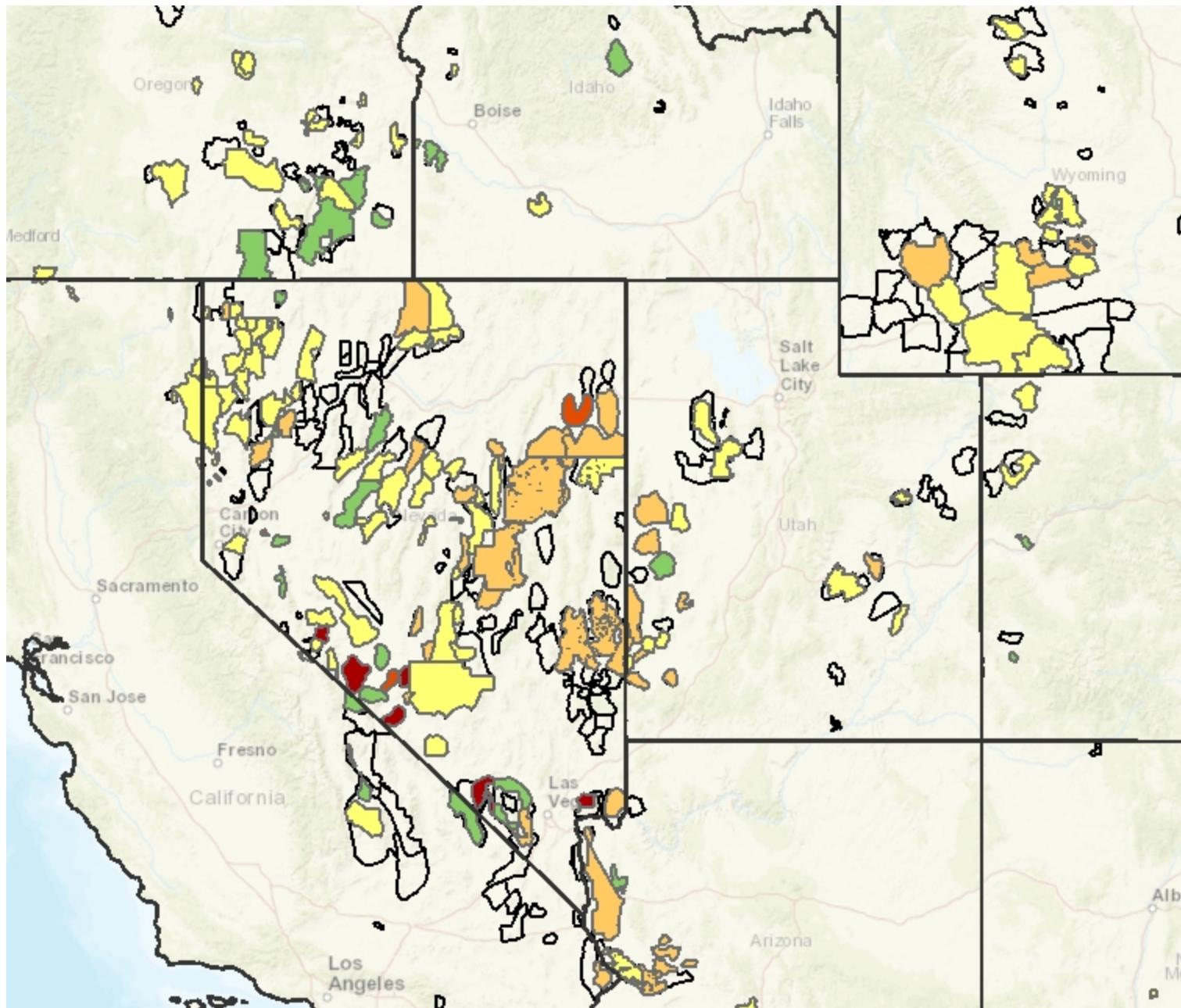




# BLM Wild Horse & Burro Program



State Boundaries

**Wild Horse Herd Management Area**

- At or below AML
- 101 - 300% of AML (Over)
- 301 - 1000% of AML (Over)
- > 1000% of AML (Over)
- Not designated for horses

**Wild Burro Herd Management Areas**

- At or below AML
- 101 - 300% of AML (Over)
- 301 - 1000% of AML (Over)
- > 1000% of AML (Over)
- Not designated for burros

Herd Management Area (HMA)

Herd Area (HA)

World Street Map



No warranty is made by the Bureau of Land Management as to the accuracy, reliability or completeness of these data for individual or aggregate use with other data. Original data were compiled from various sources. This information may not meet National Map Accuracy Standards. This product was developed through digital means and may be updated without notification.



Scale 1: 9,244,649

April 26, 2017

Contact the Wild Horse & Burro program by email [wildhorse@blm.gov](mailto:wildhorse@blm.gov) or call 866-4MUSTANGS (866-468-7826)